



# ***BEFORE AND AFTER PHOTOS***



CAFETERIA BUILDING



FINAL INSPECTION  
AND ACCEPTANCE



BUILDING K, CLASSROOM

**PROJECT SCOPE:** *The project consists of furnishing labor, tools, equipment, material and all incidentals for the Tinian Elementary School Rehabilitation Project at Building K and Cafeteria Interior. The work includes but is not limited to mobilization and demobilization, removal and replacement of 12" x 12" vinyl floor tiles including Asbestos Abatement Work at Building K; and removal and replacement of 12" x 12" vinyl floor tiles at Cafeteria Interior, in accordance with the plans and specifications and subject to the term and condition of the Contract.*

# ***TINIAN ELEMENTARY SCHOOL REHABILITATION PROJECT PHASE I: A COMPLETE REHABILITATION***

# PREVIOUS STATE OF THE CAFETERIA BUILDING



The Tinian Elementary School cafeteria rehabilitation project was a multi-phased effort designed to improve the facility's functionality and safety. These have included:

## Replacement of vinyl tiles and baseboards:

This was a key component, done to modernize the space and ensure a clean, durable flooring surface in a high-traffic area like the Cafeteria Building.

These rehabilitations are part of the PSS' ongoing efforts to maintain and upgrade school facilities across the CNMI, ensuring a safe and modern environment for students and staff.



# THE CAFETERIA BLDG. AFTER REHABILITATION



The completed rehabilitation of the Tinian Elementary School cafeteria, as part of a larger ongoing effort by the Public School System (PSS) of the CNMI, focused on a variety of improvements. The project included the replacement of vinyl tiles and baseboards, which was a key component.

These renovations are a part of a wider initiative to upgrade and maintain school facilities to provide a safe and modern environment for students and staff.



# PREVIOUS STATE OF THE TES BUILDING K, CLASSROOMS



The project was a specialized rehabilitation effort aimed at improving the safety and functionality of the classrooms. The work involved three key phases:

**Asbestos Abatement:** This is a highly specialized and regulated process. Before any new flooring could be installed, a certified asbestos abatement contractor was hired to safely remove the existing vinyl asbestos tile (VAT) and the adhesive. This process is critical for ensuring the safety of workers, students, and staff, and it must comply with strict federal regulations (like those from OSHA and the EPA's Asbestos Hazard Emergency Response Act, or AHERA) to prevent the release of asbestos fibers.

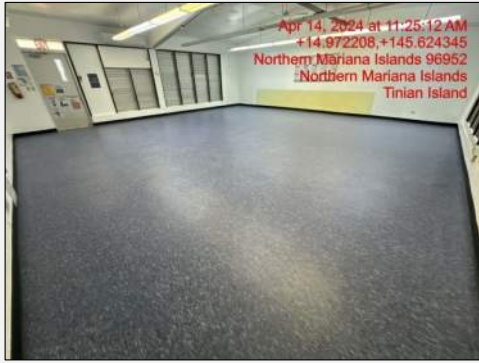
**Removal of Existing Flooring:** The old, asbestos-containing tiles and their adhesive were carefully removed using methods that minimize the chance of making the material "friable" (crumbled or pulverized).

**Installation of New Flooring:** Once the abatement was complete and the area was cleared, new, asbestos-free vinyl composition tile (VCT) were installed. This modern flooring is durable and suitable for the heavy foot traffic of a school environment.

Such projects are typically part of a larger plan by the PSS to upgrade and maintain school facilities, often funded through government grants or disaster recovery funds. The PSS and the Northern Marianas Housing Corporation (NMHC) frequently partner on these types of infrastructure projects to improve the safety and learning environment of schools across the CNMI.



# THE SAT&R BLDG. AFTER REHABILITATION



The completed project for Building K at Tinian Elementary School involved a comprehensive floor replacement. The work centered on the safe removal of the existing vinyl asbestos tile (VAT), followed by the installation of new, modern, and safe vinyl flooring. This upgrade was a crucial step in ensuring a healthy and safe learning environment for the school community. The new flooring provides a durable and clean surface for the classrooms, marking a key improvement to the building's infrastructure.

