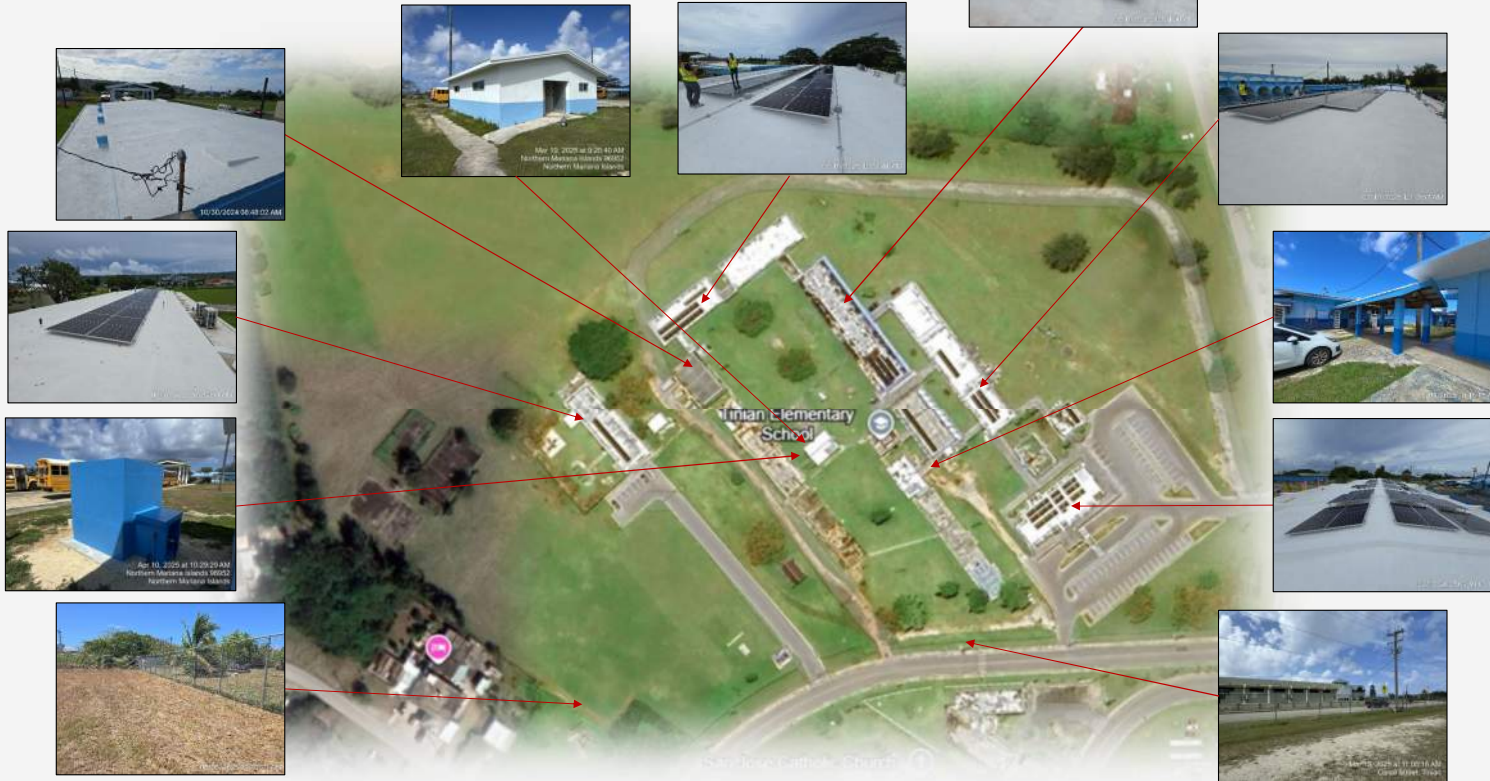




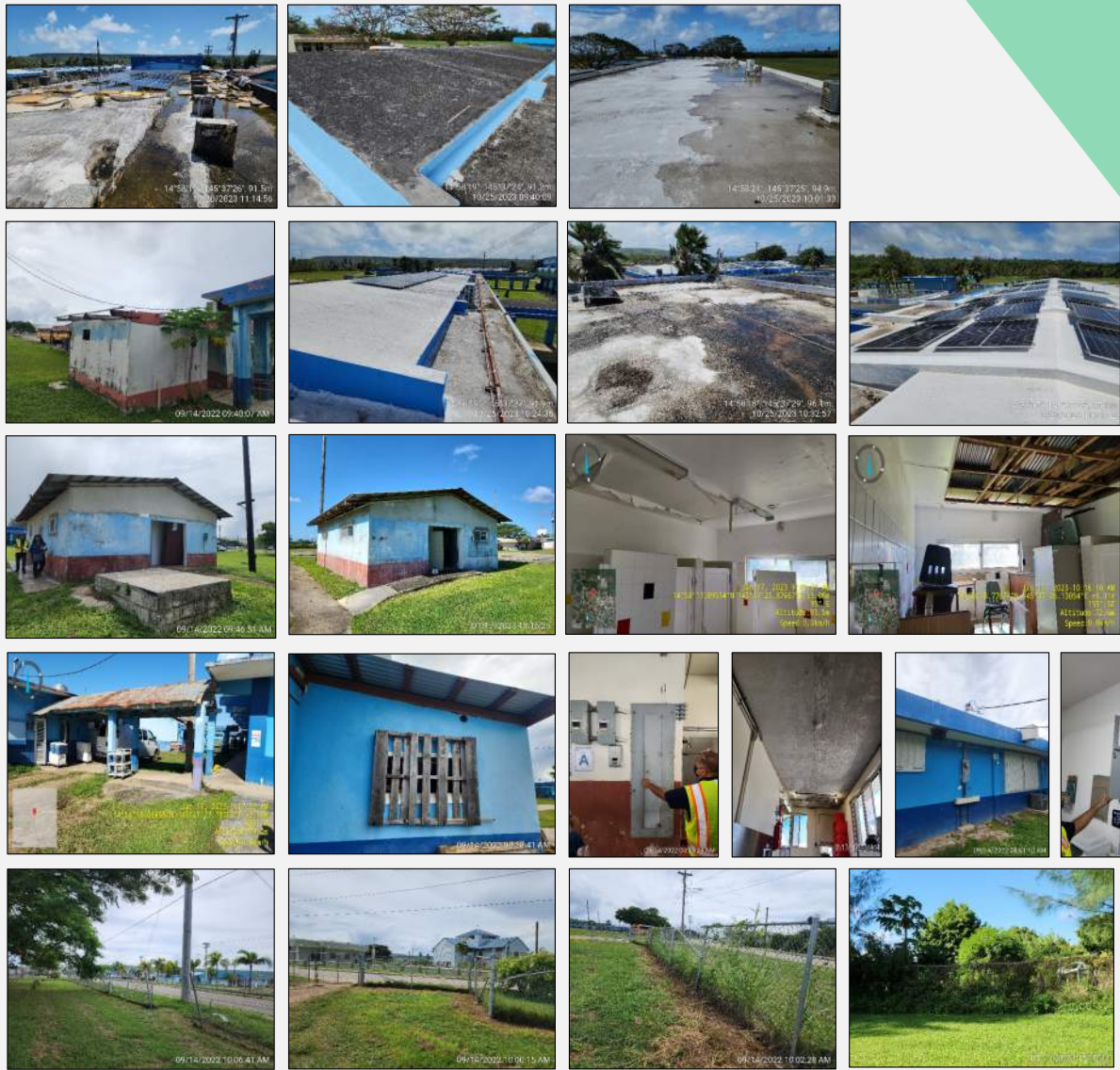
# BEFORE AND AFTER PHOTOS



PROJECT SCOPE: The project involves the rehabilitation of Building B and E Restrooms, removal and replacement of electrical system at Building H, Building I, Building K and Cafeteria Kitchen; replacement of weather head and wire gutter at the Administration Building; rehabilitation of the Covered Canopy, removal and replacement of the damaged Perimeter Fence, and roof waterproofing at Building A, Building B, Building H, Building I, Building K, Administration Building, Kitchen Cafeteria, Cafeteria, and Head Start Building.

## TINIAN ELEMENTARY SCHOOL REHABILITATION PROJECT PHASE II: A COMPLETE REHABILITATION

# PREVIOUS STATE OF THE TINIAN ELEMENTARY SCHOOL BUILDINGS



The rehabilitation of Tinian Elementary School included a wide range of improvements across multiple buildings. The summary of the completed work encompassed the following:

**Building B and E Restrooms:** These facilities underwent a complete rehabilitation, which involved modernizing the plumbing, fixtures, and overall condition of the restrooms.

**Electrical System Upgrades:** A significant portion of the project focused on replacing the electrical systems in Buildings H, I, K, and the Cafeteria Kitchen. This involved installing new wiring, panels, and fixtures to improve safety and functionality.

**Administration Building:** The Administration Building's electrical system received an upgrade with the replacement of its weather head and wire gutter, a crucial step for protecting the building's electrical infrastructure from the elements.

**Covered Canopy:** The covered canopy was rehabilitated, ensuring it continues to provide a safe and protected area for students and staff.

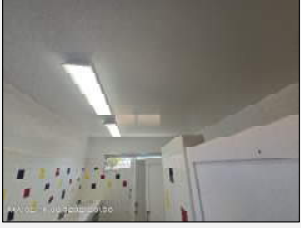
**Perimeter Fence:** The damaged perimeter fence was removed and replaced, enhancing the security and safety of the entire school campus.

**Roof Waterproofing:** A major component of the project was the roof waterproofing of multiple buildings, including Buildings A, B, H, I, K, the Administration Building, the Kitchen Cafeteria, the Cafeteria, and the Head Start Building. This work is essential for protecting the school's facilities from water damage and ensuring the long-term integrity of the structures.

This project was a comprehensive effort to modernize and secure Tinian Elementary School's campus, addressing critical infrastructure needs across numerous buildings.



# THE TINIAN ELEMENTARY SCHOOL BUILDING AFTER REHABILITATION



The completed rehabilitation of the Tinian Elementary School cafeteria, as part of a larger ongoing effort by the Public School System (PSS) of the CNMI, focused on a variety of improvements.

These renovations are a part of a wider initiative to upgrade and maintain school facilities to provide a safe and modern environment for students and staff.

